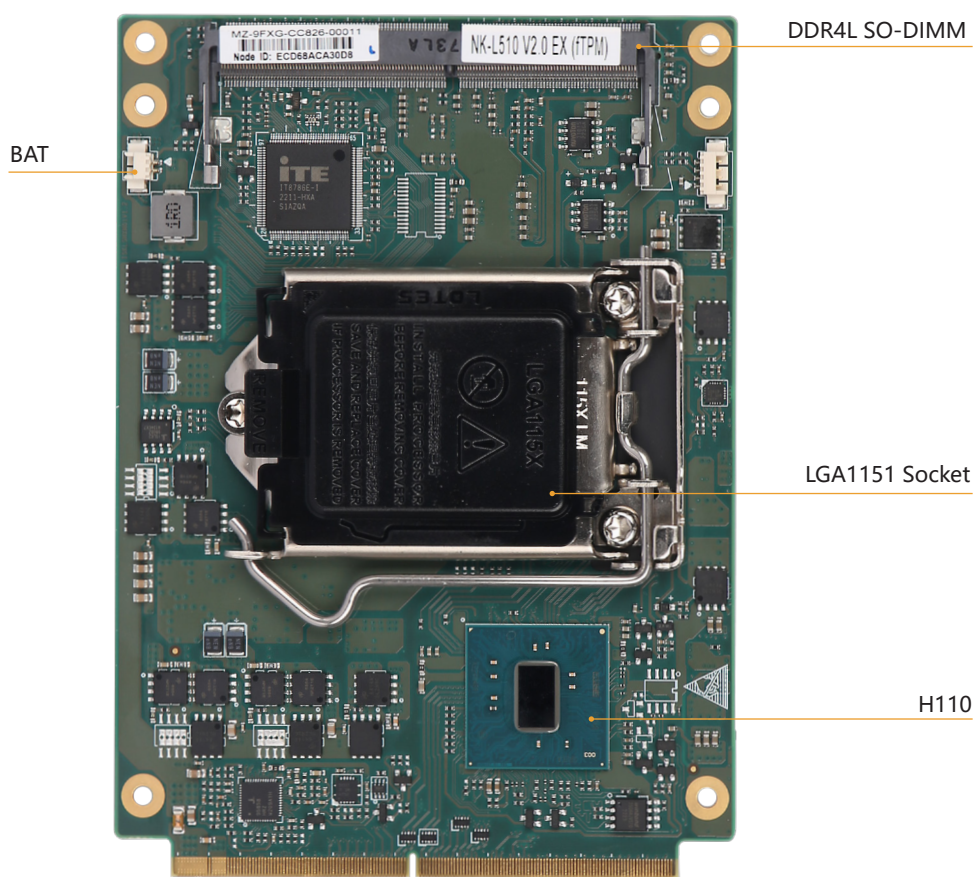


## NK-L510-H110

138\*100.1 Skylake/Kabyl-S H110 Comlac Board

### 特点 Feature

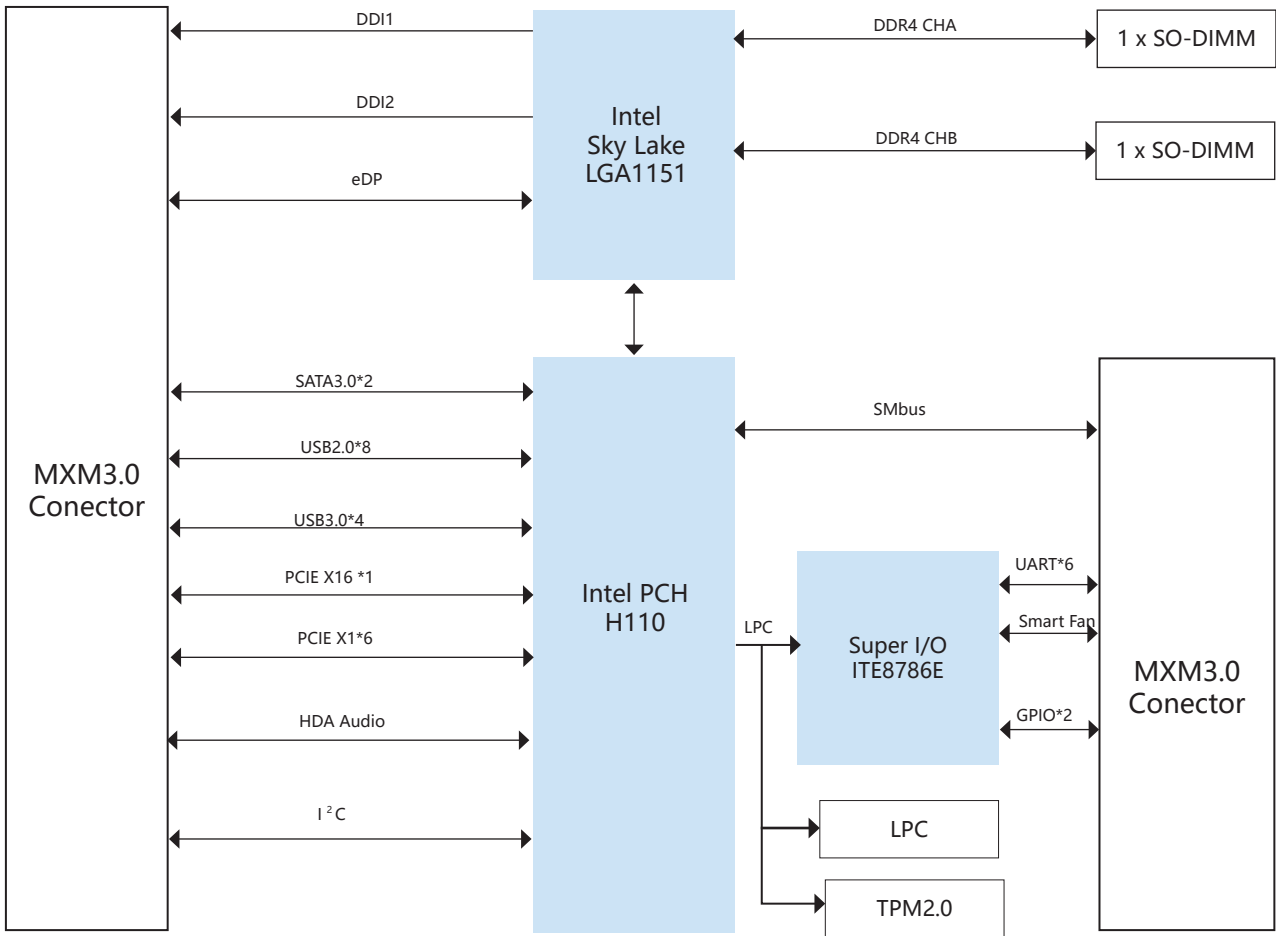
- Intel® 6/7/8/9th Generation Celeron/Pentium/Core-I series LGA1151 processor, TDP up to 65W
- Support dual channel (Non-ECC) DDR4--1866/2133/2400/2666MHz SO-DIMM slot, up to 64GB
- Support 2 x DDI, 1 x eDP, Tris-display
- Type5 Interface Signals with MXM3.0 Gold Finger



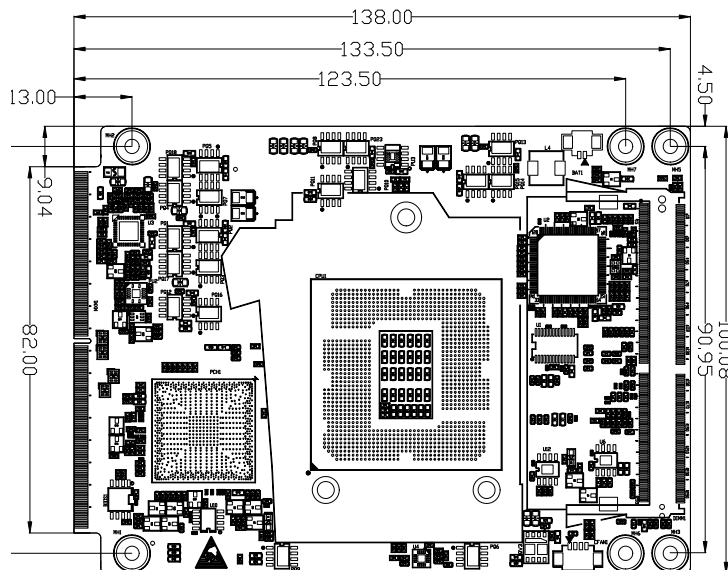
## 规格 Specification

处理器 Processor System	CPU	Intel® 6/7/8/9th Generation Celeron/Pentium/Core-I series LGA1151 processor,TDP up to 65W
	芯片组 Chipset	Intel® SoC integrated
	BIOS	AMI 128Mb UEFI BIOS
内存 Memory	技术 Technology	Dual Channel(Non-ECC) DDR4-1866/2133/2400/2666MHz, up to 64GB
	插槽 Slot	2 x DDR4 260-pin SO-DIMM slot
图形 Graphic	控制器 Controller	Intel HD graphics integrated
扩展信号 Expansion Signals	显示 Display	2 x DDI, 1 x eDP
	串口 Serial Port	2 x Uart(5line), 4 x Uart(3line)
	USB	4 x USB3.0, 8 x USB2.0
	SATA	2 x SATA 3.0
	PCIe	7 lanes 6 port(1 X4、2 X1、1xGBE (Only support Intel i219-V controller))
	PCIe x 16	1 x PCIe X 16
	GPIO	1 x 2bit GPIO
	Audio	1 x Intel HDA Audio codec
	Fan	1 x Smart Fan
	其他 others	1 x I <sup>2</sup> C,1 x SMBus,1 x LPC,1 x Buzzer
看门狗定时器 Watchdog Timer	输出 & 间隔 Output&Interval	System reset, programmable from 1~255 seconds
电源 Power	Power input	12V
操作系统 OS Support	MS Windows	Windows 7 (Only support with Intel 6th Gen. CPU), Windows 10/11
	Linux	Linux
机械参数 Mechanism	尺寸 Dimensions	(L)138mm x (W)100.1mm
	净重 Gross Weight	0.18kg
环境 Environment	温度 Temperature	Operating: 0°C ~60°C with SSD
		Storage: -40°C ~85°C
	湿度 Humidity	5~95% (Non-condensing)
	振动 Vibration	5~500Hz, 3Grms operating

框架图 Block Diagram



机构图 Mechanical Drawing



单位 (Unit): mm

**订购信息 Order Information**

料号 Part No.	型号 Model	描述 Description
G34.L51001.0A.NEK	NK-L510-H110	Type5, 138*100.1mm NK-L510-H110 Comlac SBC, 2x DDR4 SO-DIMM

**包装清单 Packing List**

料号 Part No.	数量 Qty	描述 Description
	1	NK-L510-H110 Comlac SBC User Manual